

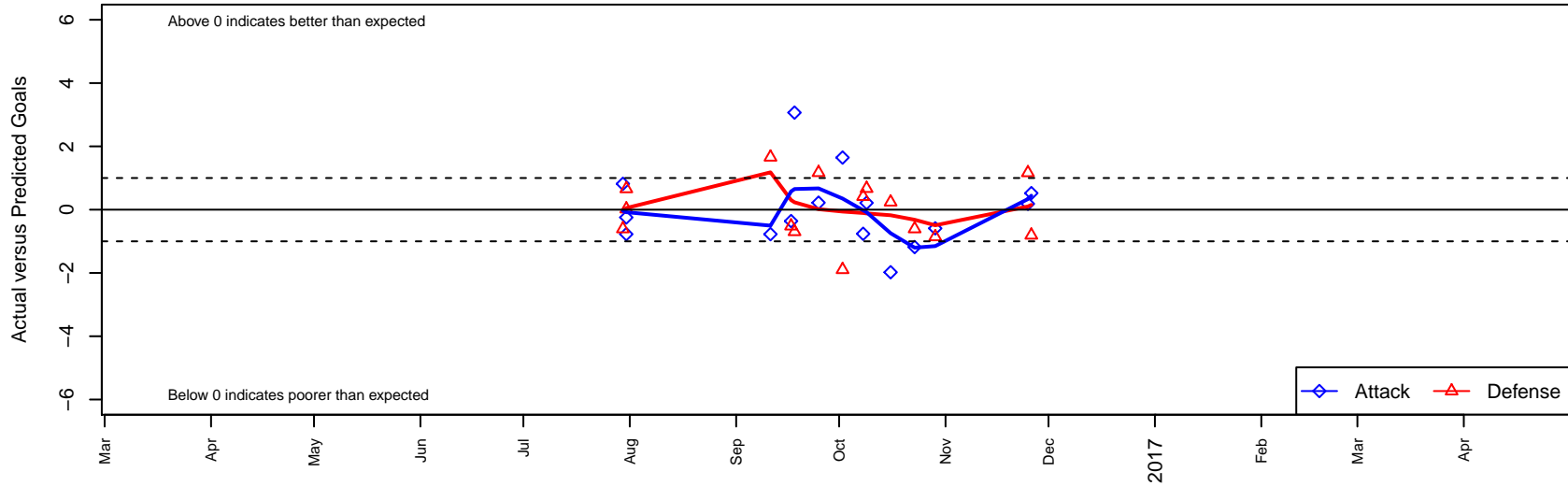
Anaheim Surf White G01

, CAS
 G01 total strength=1987
 attack=86.75 defense=43.14
 fall league = SCDL FI1 U16

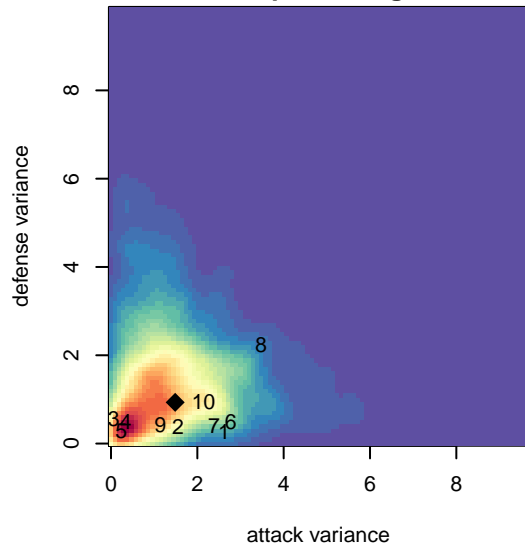
alt names used:
 Canyon PSA Blue G01
 Canyon PSA GU11 Blue
 Canyon PSA GU11 Blue
 Canyon PSA G11-Blue
 Canyon PSA GU11 Blue
 Anaheim Surf White
 Canyon PSA GU11 Blue
 Anaheim Surf White
 ANAHEIM SURF EGSL

Venues played:
 2016 Surf Cup Super Black U16
 2016 SCDL FI1 U16
 2016 Surf College Showcase Super Black U16

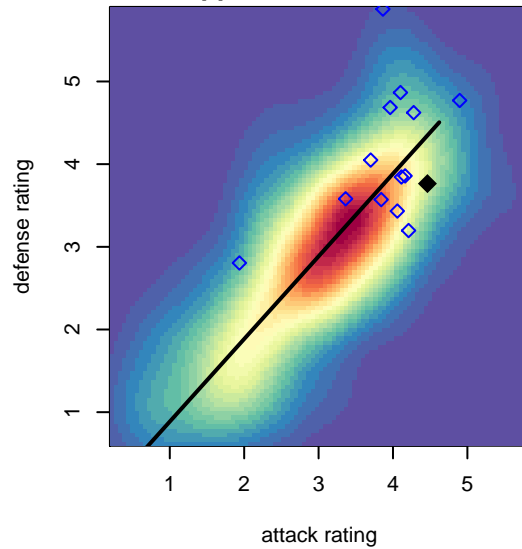
Anaheim Surf White G01
 Dots are actual minus expected GF (blue circles) and GA (red triangles).
 Blue line is smoothed change in attack strength. Red is smoothed change in defense strength.



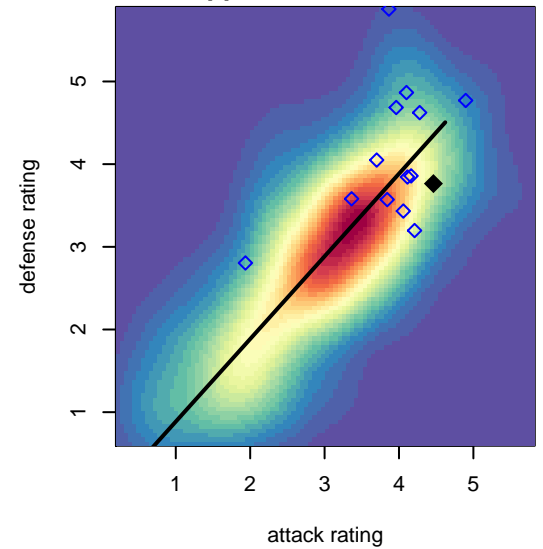
**attack and defense variance (black dot)
relative to other teams
and top 10 in region**



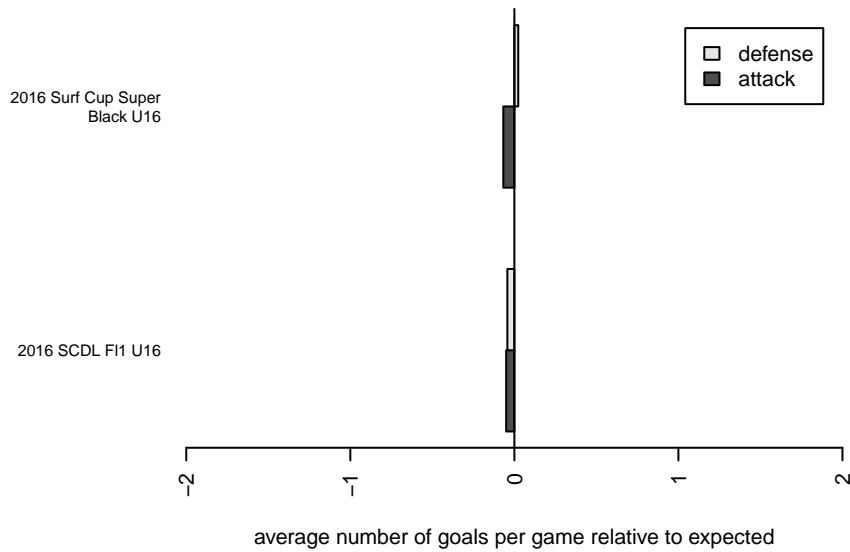
**attack and defense rating
relative to others at age
and all opponents in last 13 months**



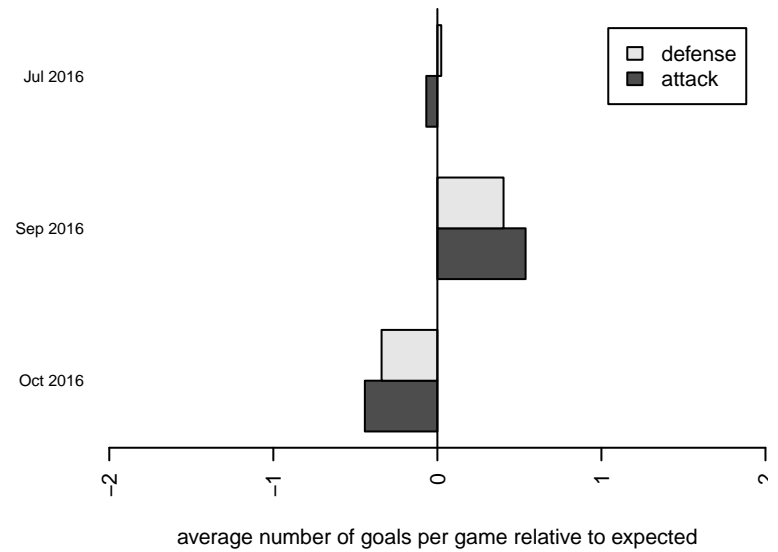
**attack and defense rating
relative to others at age
and all opponents in last 13 months**



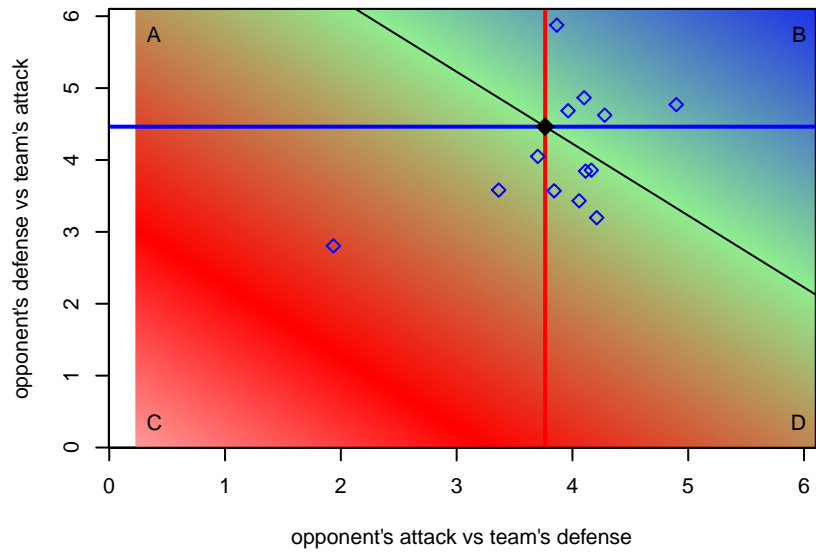
Performance relative to 13 month average



Performance relative to 13 month average



Distribution of opponents
 Red = Lose zone, Blue = Win zone, Green = Even
 Black line separates win/lose zones



lot. A=Neither has attack advantage, B=Opponent has both attack and defense advantage, C=Opponent has both attack and defense disadvantage, D=Both have

| date | home | | away | | venue | pred.home | pred.awa |
|-------------|-----------------------------------|---|-----------------------------|---|--|------------------|-----------------|
| 16-11-26 | Anaheim Surf White G01 | 1 | Real So Cal ECNL G01 | 2 | 2016 Surf College Showcase Super Black U | 0.48 | 1.19 |
| 16-11-25 | Davis Legacy Red G01 | 2 | Anaheim Surf White G01 | 1 | 2016 Surf College Showcase Super Black U | 3.17 | 0.81 |
| 16-10-29 | Beach FC Academy G01 | 2 | Anaheim Surf White G01 | 1 | 2016 SCDL FI1 U16 | 1.14 | 1.59 |
| 16-10-23 | Anaheim Surf White G01 | 1 | LA Galaxy SB Elite G01 | 2 | 2016 SCDL FI1 U16 | 2.18 | 1.39 |
| 16-10-16 | Anaheim Surf White G01 | 3 | Arsenal FC LA EGSL G01 | 0 | 2016 SCDL FI1 U16 | 4.98 | 0.24 |
| 16-10-09 | Anaheim Surf White G01 | 3 | Legends FC G01 | 0 | 2016 SCDL FI1 U16 | 2.79 | 0.67 |
| 16-10-08 | CDA Slammers FC Cerritos EGSL G01 | 1 | Anaheim Surf White G01 | 1 | 2016 SCDL FI1 U16 | 1.41 | 1.76 |
| 16-10-02 | FC Premier Cypress Sabet G01 | 3 | Anaheim Surf White G01 | 4 | 2016 SCDL FI1 U16 | 1.10 | 2.35 |
| 16-09-25 | CDA Slammers FC HB Elite EGSL G01 | 0 | Anaheim Surf White G01 | 1 | 2016 SCDL FI1 U16 | 1.17 | 0.78 |
| 16-09-18 | San Diego SC Academy Navy G01 | 2 | Anaheim Surf White G01 | 6 | 2016 SCDL FI1 U16 | 1.30 | 2.93 |
| 16-09-17 | Anaheim Surf White G01 | 3 | West Coast FC EGSL Soaf G01 | 2 | 2016 SCDL FI1 U16 | 3.36 | 1.48 |
| 16-09-11 | Anaheim Surf White G01 | 0 | Legends FC Academy G01 | 0 | 2016 SCDL FI1 U16 | 0.77 | 1.66 |
| 16-07-31 | Legends FC Academy G01 | 1 | Anaheim Surf White G01 | 0 | 2016 Surf Cup Super Black U16 | 1.66 | 0.77 |
| 16-07-31 | Anaheim Surf White G01 | 0 | MVLA ECNL G01 | 1 | 2016 Surf Cup Super Black U16 | 0.25 | 1.02 |
| 16-07-30 | LA Galaxy SB Elite G01 | 2 | Anaheim Surf White G01 | 3 | 2016 Surf Cup Super Black U16 | 1.39 | 2.18 |